

BESPOKE CONCRETE SPECIALISTS

2024 BROCHURE

BCS



CONTENTS OF OUR BROCHURE

- 1 About Us
- 2 Vision and Mission
- 3 Code Of Conduct
- 4 Polished Concrete
- 5 Diamond Ground Polished Concrete
- 6 Power Trowled Micro-Cement
- 7 Exposed Aggregate
- 8 Salt and Pepper
- 9 Imprinted Concrete
- 10 Resin Bound Stone
- 11 Sintered Stone
- 12 Pre-Cast

BESPOKE CONCRETE SPECIALISTS CODE OF CONDUCT

At Bespoke Concrete Specialists, we are committed to conducting business with integrity, professionalism, and respect. This Code of Conduct outlines the principles guiding our behaviour.



1. ETHICAL BEHAVIOUR

Integrity: Act with honesty and transparency.

Compliance: Adhere to laws and company policies.

Confidentiality: Protect confidential information.



2. WORKPLACE CONDUCT

Respect: Treat everyone with dignity and respect.

Harassment: Prevent

discrimination and harassment.

Safety: Prioritize safety and report hazards.




3. ENVIRONMENTAL RESPONSIBILITY

Sustainability: Minimise environmental impact.

Resource Conservation: Use resources efficiently.

BESPOKE CONCRETE SPECIALISTS CODE OF CONDUCT



This Code of Conduct reflects our commitment to the highest standards of business conduct. Each employee contributes to maintaining Lloyd Concrete's integrity and reputation. Follow these principles to create a positive and ethical work environment.

▶ 4. QUALITY AND CUSTOMER FOCUS

Quality: Deliver products that meet or exceed expectations.

Customer Satisfaction: Prioritise customer satisfaction.

▶ 5. CONFLICTS OF INTEREST

Disclosure: Conflicts transparently.

Fair Competition: Engage in fair competition.


▶ 6. SOCIAL RESPONSIBILITY

Community Engagement: Contribute positively to communities.

Diversity and Inclusion: Embrace diversity.

▶ 7. REPORTING VIOLATIONS

Whistleblower Protection: Report concerns without fear of retaliation.

A modern interior hallway with polished concrete floors, wood-paneled walls, and large windows. The text "POLISHED CONCRETE" is overlaid in white, bold, uppercase letters across the center of the image.

POLISHED CONCRETE

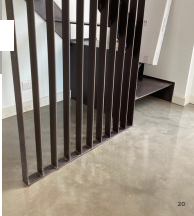


Polished concrete is a fantastic choice for homes, retail and commercial due to its unmatched durability, versatility, and sleek finish. It is low maintenance and eco-friendly qualities allow you to obtain your desired design and add a modern touch to any space it is applied in.

POLISHED CONCRETE

▶ PRODUCT FEATURES

- ✔ Hard Wearing and extremely durable finish.
- ✔ Compatible with underfloor heating systems.
- ✔ Easy to maintain.
- ✔ Internal and external use.
- ✔ Available in a wide range of colours creating a modern and sophisticated look.





KENT , UNITED KINGDOM

-Flint grey polished concrete floor

-Finish: Satin

-Area: 90m²





DIAMOND GROUND
POLISHED CONCRETE

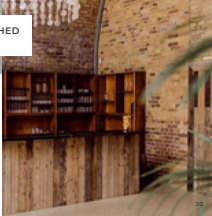


Choose Diamond Ground Polished Concrete for its sustainability, energy efficiency, low environmental impact, durability, and minimal maintenance requirements. This flooring option offers a sleek and reflective surface while contributing to a more eco-friendly and long-lasting built environment.

DIAMOND GROUND POLISHED CONCRETE

▶ PRODUCT FEATURES

- ✔ Reflectivity and Lighting
- ✔ Stain Resistance
- ✔ Slip Resistance
- ✔ Resistant to Moisture Issues
- ✔ Exposes aggregate with smooth finish



BRIXTON, LONDON

-220m² of diamond ground polished concrete

-10mm gravel aggregate



The image shows a close-up of a dark grey, textured concrete surface. The surface is covered with numerous small, light-colored aggregate particles, likely sand or fine gravel, which are exposed and protrude from the matrix. The overall appearance is rough and granular. The text "EXPOSED AGGREGATE" is overlaid in the center in a white, bold, sans-serif font.

EXPOSED AGGREGATE

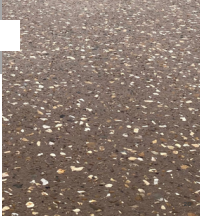


Opt for Exposed Aggregate Concrete for its natural beauty, slip resistance, durability, and low maintenance. This flooring option showcases decorative aggregates, providing a textured and visually appealing surface. With its resilience and aesthetic charm, Exposed Aggregate concrete offers a practical and attractive solution for various outdoor and indoor applications.

EXPOSED AGGREGATE

▶ PRODUCT FEATURES

- ✔ Slip Resistance
- ✔ Resistant to Weathering
- ✔ Temperature Control
- ✔ Available in a wide range of colours
- ✔ Environmentally friendly
- ✔ Low maintenance





BERKSHIRE, UNITED KINGDOM

- Exposed Aggregate Driveway
- Colour: Blenheim Brown
- Material: 20mm Flint Aggregate
- Area: 500m²



SALT AND PEPPER




Salt and pepper flooring is uniquely ground to reveal minimalist aggregates, creating a visually appealing pattern. Ideal for residential, retail, and industrial spaces, the smooth finish makes it suitable for areas with underfloor heating. Despite its durability and distinctive aesthetic, customization options are limited to aggregates supplied by the concrete plant.

SALT AND PEPPER

▶ PRODUCT FEATURES

- ✔ Slip Resistance
- ✔ Resistant to Weathering
- ✔ Temperature Control
- ✔ Available in a wide range of colours
- ✔ Environmentally friendly
- ✔ Low maintenance



HAND TROWELLED
MICRO-CEMENT

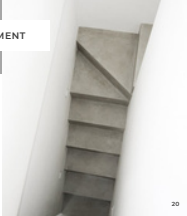


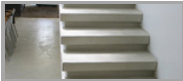
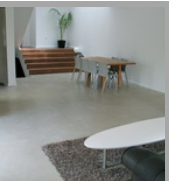
Opt for hand-trowelled micro-cement for a seamless, customizable finish that offers artistic expression and versatility. Its thin, lightweight, and durable properties make it suitable for various surfaces, providing a modern aesthetic with quick installation and easy maintenance. Additionally, it can be applied to existing substrates, offering a cost-effective and eco-friendly alternative.

HAND TROWELLED MICRO-CEMENT

▶ PRODUCT FEATURES

- ✔ Adaptable to Various Substrates
- ✔ Quick Installation
- ✔ Water Resistance
- ✔ Available in a wide range of colours
- ✔ Environmentally friendly
- ✔ Thin and Lightweight





A photograph of a modern interior space, likely a dining area, featuring large glass windows and a dining table with chairs. The floor is a light-colored, polished concrete. The text "POWER TROWELLED MICRO-CEMENT" is overlaid in white, bold, uppercase letters across the center of the image. The background shows a lush green landscape with trees and a clear sky.

POWER TROWELLED
MICRO-CEMENT

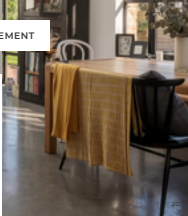


Power Trowelled Micro-Cement boasts a seamless, smooth finish, versatility, and a contemporary aesthetic. This flooring solution, blending the durability of micro-cement with the precision of power trowelling, delivers a polished, low-maintenance surface suitable for both residential and commercial spaces. Appreciate the modern look and practical benefits of power trowelled micro-cement, offering a sleek and enduring flooring option for various environments.

POWER TROWELLED MICRO-CEMENT

▶ PRODUCT FEATURES

- ✔ Reflective Surface
- ✔ Quick Installation
- ✔ Compatible with Underfloor Heating
- ✔ Available in a wide range of colours
- ✔ Environmentally friendly
- ✔ Easy maintenance



SOUTHBANK, LONDON

- Location: Southbank Tower, London
- System: Power Trowelled Micro-Cement Floors
- Area: Walls: 130m² & Floors: 275m²





IMPRINTED CONCRETE



Imprinted concrete presents a unique and customisable solution for enhancing outdoor spaces. This decorative technique involves stamping patterns and textures onto freshly poured concrete, creating the look of more expensive materials such as brick, slate, or stone. Imprinted concrete offers versatility, allowing homeowners and businesses to achieve a personalised and high-end appearance without the associated costs. With durability, easy maintenance, and a range of design options, imprinted concrete stands as a practical and aesthetically pleasing choice for driveways, patios, and walkways.

IMPRINTED CONCRETE

▶ PRODUCT FEATURES

- ✔ Reduced Weed Growth
- ✔ Weather resistance
- ✔ Easy to repair
- ✔ Customisation
- ✔ Non-slip surface
- ✔ Aesthetic





WAKEFIELD, UNITED KINGDOM

-60m² driveway

-Rustic sandstone colour with charcoal

-Imprinted concrete in London cobble.





RESIN BOUND STONE



Resin Bound Stone is a versatile and visually appealing solution for surfacing needs. This innovative technique involves combining natural aggregates with a clear resin to create a seamless, decorative finish. The result is a durable and permeable surface that offers both aesthetic charm and functional benefits. Resin Bound Stone is known for its smooth texture, UV resistance, and resistance to weed growth. Suitable for driveways, walkways, and landscaping projects, this surfacing option provides a low-maintenance, environmentally friendly, and visually striking solution for various outdoor spaces.

RESIN BOUND STONE

▶ PRODUCT FEATURES

- ✔ Permeability
- ✔ Low Maintenance
- ✔ Aesthetic Appeal
- ✔ Customisation
- ✔ Quick Installation
- ✔ UV Stability





SOUTH OCKENDON, ESSEX

-70m² Resin

- Colour: Springtime

- Additional: Crushed Glass



A modern bathroom with marble walls, a white toilet, a pedestal sink, a bathtub, and a mirror. The text "SINTERED STONE" is overlaid in the center.

SINTERED STONE

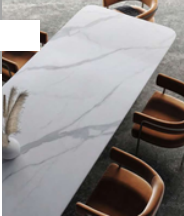


Sintered stone is chosen for its exceptional durability, versatility in design, large-format options for seamless installations, high heat resistance, water resistance promoting hygiene, UV resistance for indoor and outdoor use, low maintenance, environmental sustainability, and chemical resistance. Its thin and lightweight properties further contribute to its appeal, making it a preferred material for various applications, from countertops to flooring and wall cladding.

SINTERED STONE

▶ PRODUCT FEATURES

- ✔ High Heat Resistance
- ✔ Low Maintenance
- ✔ Aesthetic appeal
- ✔ Versatility In Design
- ✔ Water Resistance
- ✔ UV Resistance





A high-angle photograph of a modern bathroom vanity. The vanity features a light-colored, pre-cast stone countertop with two rectangular, drop-in sinks. Each sink is equipped with a chrome faucet and two side handles. A clear glass vase filled with red and yellow flowers sits on the countertop between the two sinks. The background shows a white subway tile backsplash and a mirror reflecting part of the vanity. The text "PRE-CAST" is overlaid in white, bold, sans-serif font across the center of the image.

PRE-CAST



Pre-cast concrete, crafted off-site, offers efficiency, versatility, and durability for diverse construction applications. Its controlled manufacturing ensures quality, reduces on-site disruption, and contributes to sustainability. With customisable designs and faster construction timelines, precast concrete stands as a reliable and efficient choice for modern building projects.

PRE-CAST

▶ **PRODUCT FEATURES**

- ✔ Versatility in design
- ✔ Quality finishes
- ✔ Temperature Control
- ✔ Structural efficiency
- ✔ Ease of Transportation

