

POLISHED CONCRETE MAINTANANCE MANUAL

LLOYD CONCRETE CO





1 Importance of proper care for polished concrete

2 Regular Cleaning

3 Refrain from using strong chemicals

4 Spills and preventing stains

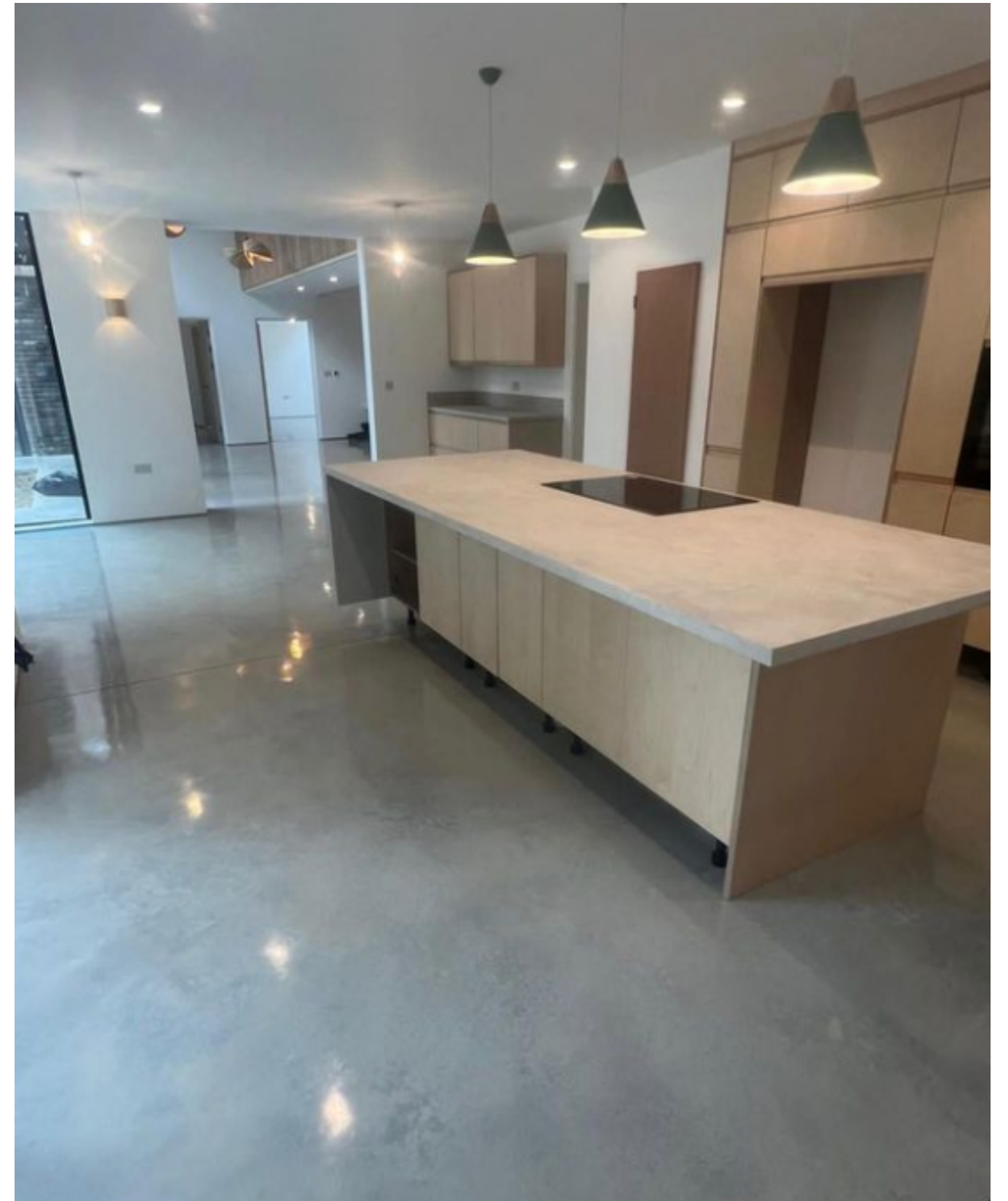
5 Surface Protection

6 Temperature Considerations

7 Routine Inspections

Importance of proper care for polished concrete

Proper care for polished concrete is essential for preserving its aesthetic appeal, extending longevity, preventing staining and damage, ensuring safety, optimizing performance, minimizing repair costs, complying with manufacturer recommendations, enhancing property value, and promoting sustainability. Regular maintenance safeguards the investment in polished concrete, contributing to a longer-lasting and visually appealing surface.



Tip: Where you can get supplies

1. Mop and window cleaners bucket (item code for mop 2737)

Contact Details: sales@capitalonline.biz

01622 714800

2. Microfiber mop

Contact Details: sales@capitalonline.biz

01622 714800

3. Selden Lemon Jell

Contact Details: Info@cesar.co.uk

01279 454 007

4. Selden Fastlane maintainer (item code b12)

Contact Details: Info@cesar.co.uk

01279 454 007

5. Electric floor buffer. (Truvox orbis 1500 20" ultra high speed polisher) Reconditioned equipment available from £325

Contact Details: A3machines@btconnect.com

01630 661596

Tips: Regular cleaning

Frequency Matters: Sweeping or vacuuming should be performed regularly, ideally daily or as needed, to prevent the buildup of abrasive particles.

Preventing Abrasion: Removing dust and debris promptly prevents them from acting as abrasives, safeguarding the polished surface from unnecessary wear.

Avoiding Scratches: Utilise a vacuum with a soft brush attachment to minimize the risk of scratching the polished concrete during the cleaning process.



Tip: Refrain from Using Strong Chemicals

Selecting pH-Neutral Cleaners: Opt for pH-neutral cleaners specifically designed for polished concrete. These are effective in removing dirt without compromising the surface finish.

Avoiding Acidic Solutions: Refrain from using cleaners containing acids, such as vinegar or citrus-based products, as these can react with the concrete, leading to etching and a loss of shine.



Dilution Guidelines: Follow manufacturer recommendations for diluting cleaning solutions to ensure they are effective without being overly harsh on the polished concrete.

Non-Abrasive Cleaning Tools: Use non-abrasive cleaning tools like soft mops or microfiber cloths to apply the cleaner. This prevents unnecessary friction that might damage the surface.

Tip: Wipe Up Spills Immediately to Prevent Staining

Immediate Action: Act promptly when spills occur. Use absorbent materials like a clean cloth or paper towel to blot and lift the liquid from the surface.

Avoiding Penetration: The quicker spills are addressed, the less likely they are to penetrate the porous surface of the concrete, reducing the risk of stains.



Regular Inspections: Conduct regular visual inspections to identify spills or potential stain sources, ensuring swift response and minimizing the chance of permanent discoloration.

Appropriate Cleaning Agents: If necessary, use a mild pH-neutral cleaner to gently remove any residue left by the spill, ensuring compatibility with the polished surface.

Tip: Surface Protection

Regular Checkups: Periodically inspect furniture feet and other objects in contact with the surface to ensure that protective pads are intact and effective.

Avoid Using Sharp Objects: Discourage the use of sharp or pointed objects directly on the surface. Even minor scratches can detract from the polished finish over time.



Felt Pads or Sliders: Place felt pads or sliders under the feet of furniture items. This creates a protective barrier, reducing the risk of scratches caused by the movement of chairs, tables, or other furnishings.

Educate Users: Inform inhabitants or occupants about the importance of surface protection and provide guidelines on appropriate behavior to minimize the risk of damage.

Tip: Temperature Considerations

Use Area Rugs: In areas with polished concrete flooring exposed to direct sunlight, consider using area rugs or window treatments to moderate temperature fluctuations caused by sunlight exposure.

Seasonal Awareness: Be mindful of seasonal temperature variations and implement measures to mitigate the impact, especially during extreme weather conditions.



Gradual Adjustment: When adjusting indoor temperatures, particularly with heating systems, aim for gradual changes. Sudden shifts can cause stress on the concrete surface.

HVAC Considerations: Ensure that heating, ventilation, and air conditioning (HVAC) systems are appropriately calibrated to maintain a consistent indoor climate.

Tip: Routine Inspections

Scheduled Inspections: Establish a regular schedule for inspections, whether monthly or quarterly, depending on the level of foot traffic and usage in the area.

Wear and Tear Assessment: Look for signs of wear, such as dull spots or loss of shine, especially in high-traffic areas. Addressing these areas promptly can prevent further deterioration.



Treat High-Traffic Areas: Pay special attention to high-traffic zones where the polished surface may experience more stress. Consider preventive measures or touch-ups as needed.